

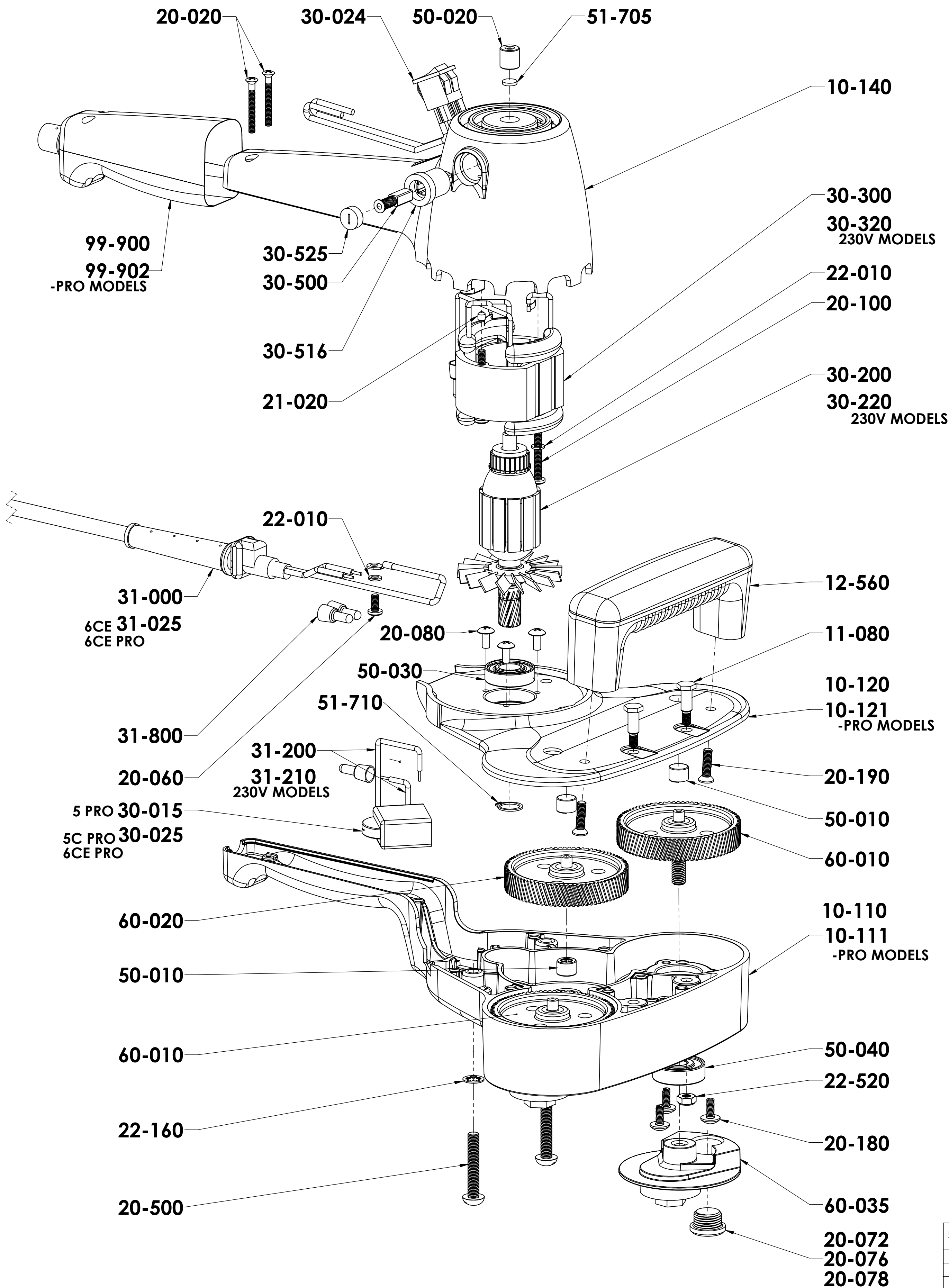
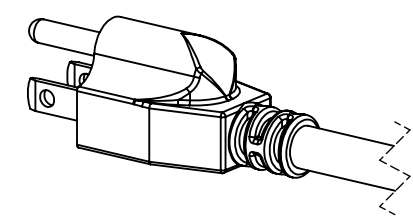


INTERACTIVE ORDERING

Make sure that you have internet access, then select your part(s) by clicking on the part number next to the part.

You may continue to add other items such as pads or brushes to your shopping cart before checking out online.

PartNo	DESCRIPTION	QTY.
60-035	COUNTERWEIGHT ASSEMBLY, ADJUSTABLE	2
60-020	GEAR, HOBBED, IDLER	1
60-010	GEAR, HOBBED, DRIVE	2
51-710	EXTERNAL RETAINING RING, .5	1
51-705	OILER FELT FOR BRONZE BUSHING	1
50-040	BEARING, MAIN DRIVE GEAR	2
50-030	BEARING, LOWER MOTOR	1
50-020	BRONZE BUSHING	1
50-010	NEEDLE BEARING	4
31-800	CRIMP-ON WIRE CONNECTOR, 22-14 AWG, NYLON	5
31-200	WIRE LEAD, 18 AWG, TINNED, BLACK	2
31-000	POWER CORD ASSEMBLY, 10', US	1
31-025	POWER CORD ASSEMBLY, 10' 6CE & 6CE PRO (NOT US) PP	1
30-525	BRUSH HOLDER CAP	2
30-516	CARBON BRUSH HOLDER, STEPPED PROFILE	2
30-500	CARBON BRUSH, CONTOURED	1
30-300	FIELD 115V, 60Hz	1
30-200	ARMATURE, 115V, 60 Hz	1
30-024	SWITCH, ROCKER, DPST, 110, 220 v	1
30-015	SWITCH, CONTROLLER FOR VARIABLE SPEED TOOL, 110V, 6A	2
22-520	NUT FOR FRONT SHOULDER BOLT	2
22-160	WASHER, LOCK,STAR 1/4 INT TOOTH	3
22-010	SPLIT LOCK WASHER FOR FIELD, #8	2
21-020	SCREW, BRUSH HOLDER RETAINING	2
20-500	SL-PHMS 0.25-28 X 1.5	2
20-190	SCREW, FRONT HANDLE RETAINING	6
20-180	SCREW, MAIN BEARING, RETAINING	2
20-100	SCREW, FIELD RETAINING	1
20-080	SCREW, MOTOR BEARING HOLD	3
20-060	SCREW, GROUNDING (8-32 x .375 PAN, PHIL)	1
20-020	SCREW, REAR HANDLE (6-32 X 1.25 PHIL OVAL)	2
99-900	SHRINK WRAP, HANDLE, BLACK	2
99-902	SHRINK WRAP, HANDLE, BLUE	1
12-560	ASSY HANDLE, FRONT	1
11-080	BOLT, SHOULDER, HEX, 10-32 x .875	1
10-140	CASE, MOTOR, MODEL 5/5C, MACHINED, MARK II	1
10-121	PLATE, COVER, ELECTRIC, MACHINED, VARIABLE SPEED, MARK II	1
10-111	CASE, GEAR, MACHINED, VARIABLE SPEED, MARK II	1



REVISIONS			
REV.	DESCRIPTION	DATE	APPROVED
A	INITIAL RELEASE	1/12/2015	D. BLAKE

PROJECTION: THIRD ANGLE	UNLESS OTHERWISE SPECIFIED: DIMENSIONS ARE IN INCHES	NAME D. BLAKE	DATE 1/12/2015		RUPES USA, Inc. 14320 Longs Peak Ct. Longmont, CO 80504 USA Voice: +1 970 535 9108 Fax: +1 303 723 8880 www.cyclotoolmakers.com
CHECKED	TOLERANCES: FRACTIONAL: 1/16" A ANGULAR: ±0.5 DECIMAL: .X ±.03 DECIMAL: .XXX ±.01 DECIMAL: .XXXX ±.005 BREAK EDGES: .005/.020 Fillet RADIUS: .005/.020	DRAWN D. BLAKE	1/12/2015		
ENG APPR.	INTERNET DIMENSIONS & GEOMETRIC TOLERANCING PER ANSI Y14.5M	MFG APPR.		SIZE D	DWG. NO. 80-112
Q.A.		USED ON		SCALE: 2:3	WEIGHT: 1lb
COMMENTS:		APPLICATION	FINISH	SHEET 1 OF 1	REV A